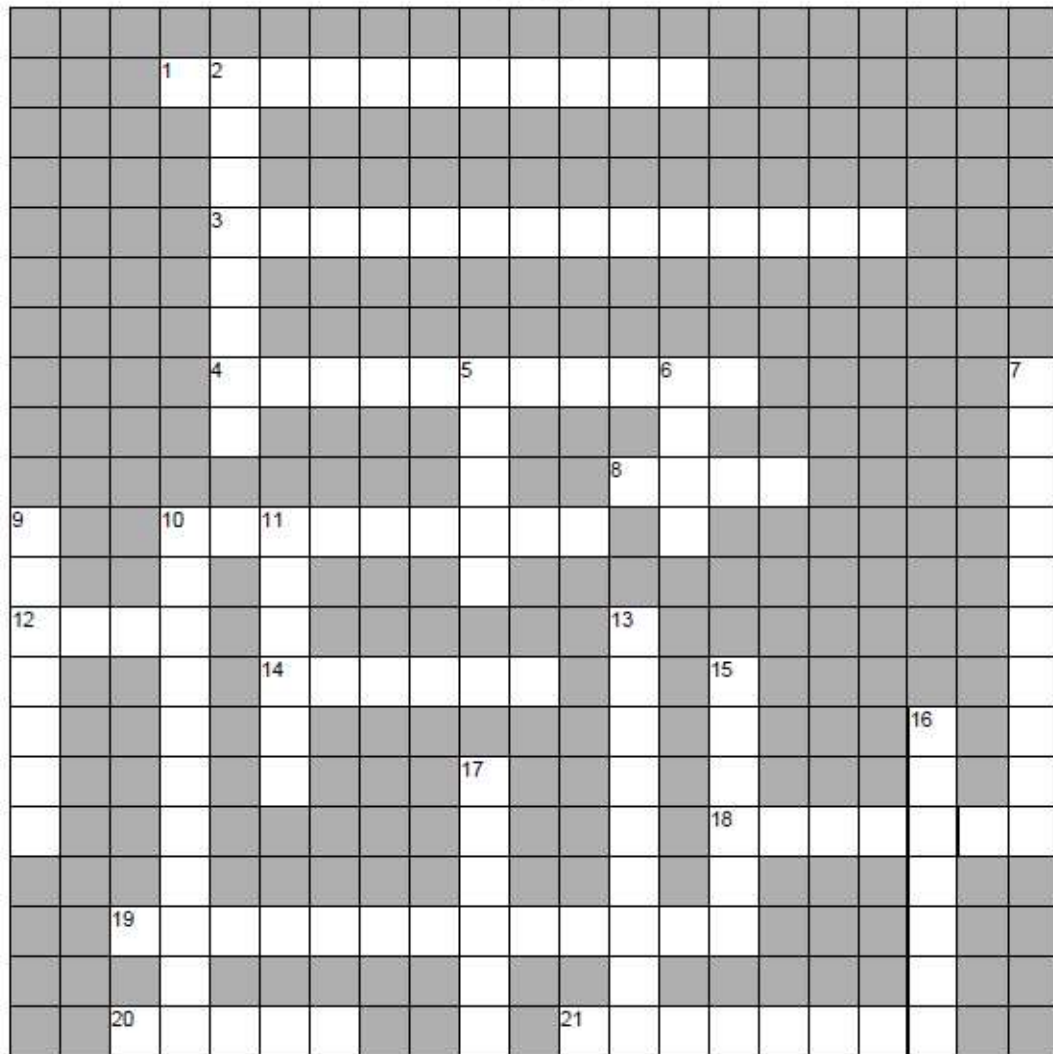


Cells



Across

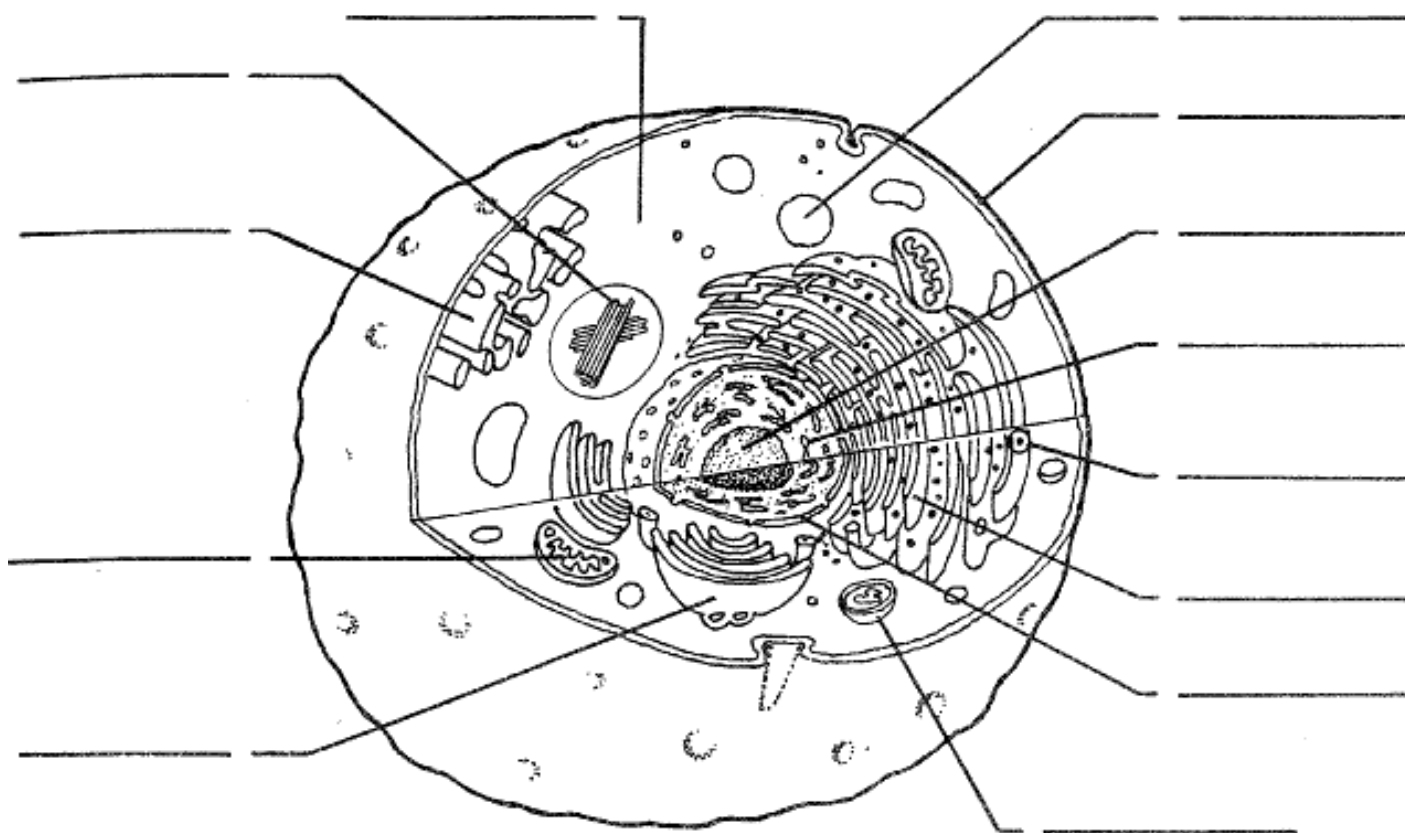
1. Process used to make energy in living organisms.[11]
3. Plant process using sunlight to make sugar.[14]
4. Green pigment in plants.[11]
8. Only plant cells have a cell ____.[4]
10. Jellylike substance inside cells.[9]
12. Smallest building block of living organisms.[4]
14. Group of organs with the same function.[6]
18. Type of sugar made in photosynthesis.[7]
19. Enlargement with a microscope.[13]
20. Place where the microscope slide sits.[5]
21. Both plant and animal cells have a cell ____.[8]

Down

2. Microscope lens close to the viewer's eye.[8]
5. Group of tissues with a similar function.[5]
6. Part of the plant where photosynthesis takes place.[4]
7. Instrument used to view cells.[10]
9. Control centre of a cell.[7]
10. Organelle containing chlorophyll.[11]
11. Group of cells with a similar function.[6]
13. Microscope lens close to the object being viewed.[9]
15. Gas required for respiration.[6]
16. Carbon ____ gas.[7]
17. Cell drawings should be done with a ____.[6]

Only label the organelles.

Label the organelles in the diagram below of a typical animal cell. Describe the function/purpose of each organelle in the cell.



- a. vacuole _____
- b. lysosome _____
- c. ribosomes _____
- d. Golgi complex _____
- e. cytoplasm _____
- f. nucleus _____
- g. nucleolus _____
- h. nuclear membrane _____
- i. cell (plasma) membrane _____
- j. mitochondria _____
- k. smooth endoplasmic reticulum _____
- l. rough endoplasmic reticulum _____
- m. centriole _____